



**Waldo Vieira\***

\* Medical Doctor. Veteran Researcher of Conscientiology.

waldovieira@iipc.org

**Key-words**

Bioenergetic Balneum  
CEAEC  
Conscencial Energies  
Energetic Bath  
Heuristics  
Self-research Laboratories

**Unitermos**

Balneário Bioenergético  
Banho Energético  
CEAEC  
Energias Conscienciais  
Heurística  
Laboratórios de Autopesquisa

**Palabras-Clave**

Balneario Bioenergético  
Baño Energético  
CEAEC  
Energías Conscienciales  
Heurística  
Laboratorios de Auto-investigación

## Bioenergetic Balneum (Intraphysicology)

Balneário Bioenergético (Intrafisicologia)

Balneario Bioenergético (Intrafisicología)

**Abstract:**

This article explains the concept of bioenergetic balneum, an environment that predisposes the lucid utilization of conscencial energies, and the manifestation of the attributes of the mentalsoma, due to the intense action of the positive geoenergies of the place. The theme is analyzed according to 33 specialties of Conscientiology that provide information for our understanding. The Center for Higher Studies of the Consciousness (CEAEC) or Knowledge Town is presented as a prototype of the condition of bioenergetic balneum, as it is located in a region of vigorous nature, and has laboratories of conscencial self-research and holotheca, creating and keeping a healthy local holothosene.

**Resumo:**

O artigo aborda o conceito de balneário bioenergético, ambiente que predispõe a utilização lúcida das energias conscienciais e a manifestação dos atributos do mentalsoma, devido à ação intensa das geoenergias positivas do local. O tema é analisado segundo 33 especialidades da Conscienciologia que apresentam subsídios para o seu entendimento. O Centro de Altos Estudos da Consciência (CEAEC) ou Cognópolis é apresentado como um protótipo da condição do balneário bioenergético, por situar-se em uma região de natureza vigorosa e possuir laboratórios de autopesquisa consciencial e holoteca, criando e mantendo um holopensene local sadio.

**Resumen:**

El artículo aborda el concepto de balneario bioenergético, ambiente que favorece la utilización lúcida de las energías conscienciales y la manifestación de los atributos del mentalsoma debido a la intensa acción de las geoenergías positivas del lugar. El tema es analizado según las 33 especialidades de la Conscienciología que ayudan a entenderlo. El Centro de Altos Estudios de la Conciencia (CEAEC) o Cognópolis es presentado como el prototipo de la condición de balneario bioenergético, por estar situado en una región de naturaleza exuberante y poseer laboratorios de auto-investigación consciencial y holoteca, creando y manteniendo un holopensene sano del lugar.

**Definition.** *Bioenergetic balneum* (Latin: *balnearium*, related to bath) is the intraphysical site that possesses its own specific holothosene of highly impactful positive geoenergies and, consequently, predisposes the healthy use of conscencial energies and the open use of mentalsomatic attributes being, in principle, cosmoethical and evolutionary regarding the consciousnesses.

**Synonyms:** 1. Conscientiotherapeutic balneum; bioenergetic spa. 2. Knowledge town; consciousness self-research resort; conscencial self-research laboratories. 3. Heuristics megalaboratory; *uterus of the mentalsoma*.

**Etymologicistic.** In the French language, the word *balnéaire* appeared in 1865.

**Balneology.** *Balneology* (Latin: *balneum*, bath;

logos, treatise) is the technical study of baths.

**Balneography.** *Balneography* (Latin: *balneum*, bath; *graphein*, describe) is the description or treatise of baths.

**Neologistic.** Including the expression *bioenergetic balneum*, a technical neologism of Holo-chakralogy, here is the series of 15 new and derived expressions (cognates) on the same theme used in this essay, and listed in alphabetical order:

01. **Assimilable energy** (Holo-chakrality).
02. **Bioenergetic balneability** (Quality).
03. **Bioenergetic balneology** (Study).
04. **Bioenergetic balneotherapy** (Therapy).
05. **Bioenergetic balneum** (Place, Rooms).
06. **Bioenergetic index** (Conscientiometry).
07. **Conscientiotherapeutic balneum** (Therapeutic Establishment).

08. **Energiferous** (Geoenergies).
09. **Energosphere** (Terrestrial Attribute).
10. **Heuristics megalaboratory** (Place).
11. **Hydromnemonic** (Memory of the Water).
12. **Intrawall bioenergies** (Indoors).
13. **Mentalsomatic hydra** (Pluralization).
14. **Mentalsomatic Spa** (Conscientiology).
15. **Pancognition** (Parapsychism).

**Antonyms.** 1. Somatic balneum; establishment destined for baths (water); tourist spa; public enclosure destined for baths. 2. Hot springs; balneal time; balneal season; balneal spa of medicinal waters; bathhouse. 3. Bathtub; bathroom.

**Colloquialism.** In the colloquialism, the expression *bioenergetic spa* is frequently used (Base-year: 2001) to mean bioenergetic balneum.

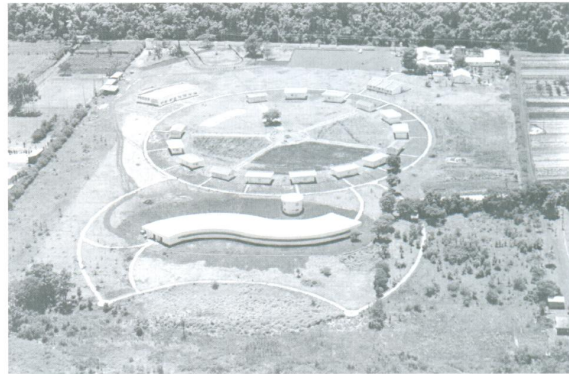
**Abbreviation.** As an example, here is the abbreviation of an energetic balneum: *CEAEC*, the Center for Higher Studies of the Consciousness, in Foz do Iguaçu, Paraná, Brazil.

**Synthesis.** The synthesis of an energetic balneum, without any doubts, is the *vibrational state* (VS).

**Analogism.** The bioenergetic balneum shows some similarity to the *conventional balneum*, in which one takes immersion baths in water, or the tourist place, e.g. Balneário Camboriú, a town of Santa Catarina, Brazil, and Búzios, a balneum of the state of Rio, Brazil, which are both tourist spas.

**Towns.** Out of many others, here are 11 Brazilian balneal towns with hot springs and aquatic parks: Araxá, Cambuquira, Caxambu, Lambari and São Loureço, in Minas Gerais; Lindóia and Serra Negra, in São Paulo; Caldas da Imperatriz and Tubarão, in

Santa Catarina; Caldas Novas, in Goiás; Águas Quentes, in Mato Grosso.



Photography 01. *CEAEC: Aerial View*

**Philosophy.** Philosophy, Ethics and Logic are indispensable to contain the excesses of human immaturities in the brutalizing processes originated from the abuses of the science applied to technology (technologists, technological torture, technophobia/technolatry, technovictims/technodependents) and from the performance of the institutions of public opinion. This justifies the existence of a bioenergetic balneum, the basic philosophy of which is cosmoethic and universalism, and that can sponsor the consciential openness of all neophilic personalities.

**LIKE A CATALYSIS, CATHARSIS, INTRAPHYSICAL RECYCLING OR EXISTENTIAL RECYCLING, THE BIOENERGETIC BALNEUM FACILITATES THE RECUPERATION OF THE UNITS OF LUCIDITY. THESE FACTS OCCUR IN THE LABORATORIES OF CEAEC.**

**Heuristics.** Regarding the interested and motivated person, the bioenergetic balneum can work as the *uterus of the mentalsoma*, inspiring original ideas, inventiveness and discoveries in any line of research; for this, it is the *Heuristics Megalaboratory*.

**Machines.** The *intrapysical base* or, strictly speaking, the *projectarium*, is a first machine, which is technical, that serves as a receptacle, or a nest, for

a second machine, which is natural and physiological: the *soma* of the projected intraphysical consciousness.

**Exclusion.** Considering this, the Laboratory of the *Projectarium* inside a bioenergetic balneum, as there is in CEAEC, is quite right, as well as the exclusion of the majority of the conventional machines, which are completely inadequate for the deepening study of the consciousness in an integral manner, according to the consciential paradigm on which the technical principles of Conscientiology are based.

**Mechanics.** We cannot be mistaken by the transitory intraphysical life. The wisest approach is to minimize the machines and valorize the consciousnesses. The lucid extraphysical consciousnesses do not employ *Mechanics*.

**Semi-extraphysical consciousness.** Obviously, the passion for machines does not predispose the intraphysical consciousness to be a *semi-extraphysical consciousness*.

**Thought.** The *machine* is very important to billions of people. However, it is not everything. An original and *lucid thought* surpasses and nullifies all of the effect of any machine, being that this thought is more relevant and enriching to our consciential evolution in the condition of matrix of the thosenity of the Cosmos.

**Amplitude.** There is no machine that thinks *per se* with the vigor and the amplitude of the attributes of the intraphysical consciousness.

**Taxonomy.** In spite of the exposed above, among the most requested machines for the regular functioning of a bioenergetic balneum, at the least the following 3, listed here in alphabetical order, should be included:

A. **Airplane:** to enable interested people to access the location.

B. **Car:** also to enable people to access the location, the personal car is needed for those who do not live there (basecon, condominium).

C. **Laptop:** the ideal for field and laboratory personal records and technical notes.

**Homo.** Evidently the *Homo despertus* (man or woman) is the one that takes more advantage of the bioenergetic balneum, as he/she increases his/her energetic defenses there.

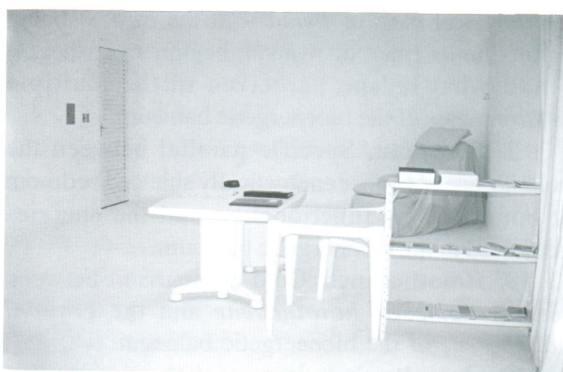
**Effects.** Obviously, the *bioenergetic index* and the *bioenergetic balneability* in the bioenergetic balneum are of a more elevated intensity than in common places, in traditional balneums or spas, and are consequently more healthful.

**Subtleties.** It is recommended that the moti-

vated intraphysical consciousness use a laptop computer during the time spent in the bioenergetic balneum to make immediate notes as soon as original ideas, or the sensations of energetic, parapsychic, or personal energetic-animic-psyhic signals arise, at any place and moment.

**Record.** Up to the end of the year 2000, the Penta Laboratory was the laboratory of the bioenergetic balneum, CEAEC in this case, that broke the record of experiments of self-research of the consciousness, with 1,545 individual activities tabulated.

**Explicitness.** The condition of excellence of functionality of the bioenergetic balneum and its omnipresent energies is totally *explicit* to the one who is sensitive regarding consciential energies. This fact is based on *personal explicitness*, rather than groupal.



Photography 02. Laboratory: Internal View

**Theorice.** According to theorice, the bioenergetic balneum is the *ideal holothosene* for the development of the 99% of one's *personal experience*, after the intraphysical consciousness feels a veteran regarding the 1% of the theories about consciential energies, energetic-animic-psyhic signals, lucid projectability, and other intraconscential developments that are priorities within the worksheet of execution of the clarification task, consciential gestations and existential program.

**Quality.** The importance of the bioenergetic balneum is its *consensual condition* of being a fulcrum of *positive consciential energies*. There its basic qualification lies.

## **IN THE KIT OF EACH CONSCIOUSNESS SELF-RESEARCH LABORATORY, IN**

**A BIOENERGETIC BALNEUM,  
A SPECIFIC QUESTIONNAIRE  
ABOUT ITS OBJECTIVES  
AND POTENTIALITIES  
IS ALWAYS INCLUDED.**

**Test.** The initial and logical test that every intraphysical consciousness should take into a bioenergetic balneum is to make stark comparisons (collations, parallels) between his/her personal habitual existential environments and the balneum environment, drawing practical conclusions, e.g. the following 3, listed in alphabetical order:

1. **Base.** Self-critical collation between the intraphysical base of *Penta* – in the case of being a practitioner (man or woman, beginner or veteran) – and what he/she perceives in the multiple environments of the bioenergetic balneum.

2. **Bedroom.** Specific parallel between the holothosene of his/her energetically shielded bedroom at home and its functionality, and the energies perceived in the bioenergetic balneum.

3. **Holothosenes.** Cold comparison between his/her *domestic holothosene* and the *groupal holothosene* of the bioenergetic balneum.

**Reciprocity.** It is important to consider that every comparison (or every analogy) has the effect of demonstrating the mutuality or reciprocity of the observations *in two ways*. The diagnosis of the *new* reality and, at the same time, as a consequence, the diagnosis of the *old* one. The approach to the compared object reflects in the *object to which it is being compared*.

**Project.** Among the projects in progress today (Year-base: 2001) for the physical and administrative construction of a bioenergetic balneum, it is important to highlight the *International Academy of Conscientiology* (IAC), in Evoramonte, Alentejo, Portugal.

**Achievements.** Two realities characterize and compose the achievements of a bioenergetic balneum:

1. **Demand.** The pressure of the demand and the requests regarding its continuous use.

2. **Fruit.** The healthy fruit or the reliable statistical number of useful experiments in its laboratories and other technical rooms.

**Fatuistic.** Above all, facts should guide the self-research of consciousnesses and impose the success-

ive directives of investigation. Starting from this basic principle, the most important facts in the *groupal holothosene* of a bioenergetic balneum are essentially the following 4, listed in chronological order of manifestation:

1. **Frequency.** The frequency of those interested, young and old men and women.

2. **Results.** The results of the stay of the researchers.

3. **Articles.** The technical works published – articles, papers, thesis, books – that the energetic balneum gives rise to. In this particular, it is worth consulting the items related to the subject that are components of the Specific References, in this essay, about CEAEC.

4. **Prototype.** In the condition of prototype or model, the condition of exemplarism that the bioenergetic balneum provokes when it stimulates the creation of other assistential establishments.



Photography 03. General View of the Laboratories

**Statistics.** One of the most relevant statistics regarding the bioenergetic balneum is the listing of the *totals of the individual experiments* of its laboratories.

**History.** The public baths in Ancient Rome were called *balneas*. From there comes the conventional balneums. The therapeutic action of baths in the open air contributed to the development of balneums in every corner of the planet, e.g. the following 5 places of the Ancient World, listed here in alphabetical order:

1. **Babylonia.** In the ruins of Babylonia, the remains of buildings destined for baths were found, with bathtubs and other adequate components for this purpose.

2. **Chaldea.** The public balneums originated in Chaldea, a province of Ancient Asia.

3. **Egypt.** In Persia and Egypt, in a period before

Christ, there were balneal establishments imitating the Chaldeans ones. The hot springs of Cairo and Alexandria were remarkable.

4. **Greece.** Public balneums, in which people used to bathe festively in honor of the gods, were installed in Greece during the period of Pericles (490-429 BC). The Greeks passed this practice on to the Romans.

5. **Rome.** In Rome, the habit of bathing in public started in the period of Pompey (Cneius Pompeius Magnus: 106-48 BC) and reached its maximum phase, with approximately 600 balneums, during the govern of Octavius (Augustus or Caius Julius Caesar Octavianus Augustus: 63 BC – 14 AD). At Pantheon, a gigantesque round-shaped temple, one can see the remains of a famous bath establishment that had been ordered built by Agrippa (Marcus Vipsanius: 63-12 BC). In Pompeii, the nobles had balneums in white marble.

**Specialties.** Here are 33 specialties of Conscientiology, enumerated in alphabetical order, which give information to broaden our understanding of the bioenergetic balneum:



Photography 04. Village - The Researcher's House

01. **Androsomatics.** In the field of Androsomatics, the bioenergetic balneum concentrates its research regarding the androsoma, as it was done in the Holothecca of CEAEC, in which the *Androtheca* was introduced with all the artifacts of knowledge that are capable of further clarifying the complexity of the human body specific to a man, his androchakra and his *androsomes*.

02. **Communicology.** Regarding Communicology, the bioenergetic balneum is in charge of promoting the dissemination of the findings of its investigations; to that end, a publishing house was created, and the technical team of CEAEC has already published, as an example, 6 types of publications:

A. **Appointment Books.**

B. **Articles.**

C. **Booklets.**

D. **Books.**

E. **Periodicals.**

F. **Self-research Series.**

03. **Conscientiocentrolology.** Based on Conscientiocentrolology, that is, in the ambit of the research of the Conscientiological Intraphysical Society, the bioenergetic balneum represents nothing else but a fruit of this research, introduced to supply the deficiencies of the still pathological *Human Society* regarding the handling and use of consciential energies (CEs) on a cosmoethical basis.

04. **Conscientiometry.** In the universe of Conscientiometry, there are 2 correlated principles in intraphysical life, in this ascending order of relevance:

A. **Liquid.** To conventional scientists, men and women, water is the most extraordinary liquid known to exist for the *human body* (Somatics).

B. **Tool.** To the conscientiologists, men and women, the consciential energy is the most extraordinary objective tool known to exist for the *human being* (Holosomatics).

**Shower.** The *hydromagnetic shower* is a very practical bioenergetic resource, employed in Holo-chakralogy, through the union of the water of the shower and the consciential energies of the one who is taking the shower.

05. **Conscientiotherapy.** Based on Conscientiotherapy, the bioenergetic balneum can work for conscientiotherapists and evolutients (patients in evolution), men and women (conscientiotherapeutic balneum), in the same way as *balneotherapy* (Latin: *balneum*, bath; *therapeia*, treatment), with the treatment of illnesses through the methodical use of local bioenergies (unblockings, balances), instead of only water (hydrotherapy, thalassotherapy, chrenotherapy; swimming-pools, showers, hydromassages).

**Balneotherapy.** The *bioenergetic balneotherapy* exercises actions on the holosoma that are physical (sensations), electrical (neurological), thermal (better irrigation of the blood) and, lastly, has the general biochemical effects of unblocking and balancing the consciential energies of the organs and systems that were blocked or imbalanced, balancing biovortices and improving the organic homeostasis.

06. **Conviviology.** According to the concepts of Conviviology, the lucid intraphysical consciousness must rationally learn to coexist pacifically and ratio-

nally with 2 elements that are fundamental to us human beings:

A. **Water.** We need to live together with water day-by-day, our whole life, in our period of experience in this dimension. Under various points of view, this liquid, or this three-atom molecule, remains a worrisome problem. A house or an apartment, for example, is not as viable a place of residence without water.

B. **Consciential Energy.** We need to live together with consciential energy (CE), beginning with the immanent energy; for example, the majority of the illnesses and disturbances of the human being occur due to energetic blockages and imbalances in its organs and systems (chakras).

07. **Cosmo-analysis.** In the study of Cosmo-analysis, with relation to the bioenergetic balneum, it is important to emphasize the creation of the Cosmogram Laboratory, in the same way it is in CEAEC, built on 2 floors, and located in an isolated technical building.

08. **Cosmoethics.** Concerning Cosmoethics, one of the fundamental needs of any bioenergetic balneum is the creation of the Cosmoethics Laboratory, having in mind the improvement of the qualification of the efforts and performances of the researchers (*orthothosene*).



Photography 05. Basecon I: Dwelling of Resident Researchers

09. **Despertology.** Congruent with Despertology, another resource that should exist in the consciousness self-research complex within the bioenergetic balneum, obviously to enable *consciential evolution*, is the Despertology Laboratory.

**Term.** One can reach the permanently-totally-intrusion-free condition in just one human life.

10. **Evolutionology.** According to Evolutionology, the highest or most evolved point of the bioenergetics of an intraphysical consciousness, in relation to the extraphysical consciousnesses, is when he or

VIEIRA, Waldo. Bioenergetic balneum (*intraphysiology*)

she spontaneously receives, without expecting, without influencing, and without any effort of his/her personal participation, a continuous flow (bath, shower) of healthy and enriching energies from an extra-physical helper, thereby giving assistance to the people present or to an environment, during half a minute or minutes, aware that it is acting as a canal or *passe-partout*, a useful minipiece (minicog) within the highly efficient assistantial structure.

**Spontaneity.** The bioenergetic balneum predisposes to the maximum this spontaneity of manifestation of the high level energies, and it was for this reason that the Evolutionology Laboratory was constructed in CEAEC. The self-evolution of the consciousness can be intensively impelled when it is based on bioenergetic mastery, which begins with the conquest of the vibrational state (VS).

11. **Experimentology.** Under the view of Experimentology, the energetic baths are surprisingly *potentiated* and *potentiators* when they occur in a specialized bioenergetic balneum such as the Center for Higher Studies of the Consciousness, in Foz do Iguaçu.

**Clincher.** This case is a mere pacifying *clincher*, that is, the ideal is that the person do the experiment on his/her own with the maximum self-criticism, without any apriorism nor self-suggestion, and observe the facts (investigative self-skepticism).

12. **Groupkarmalogy.** In the field of Groupkarmalogy, the *routes of collision* finish in the bioenergetic balneum, giving a place for the intensification of the *routes of approximation* among the people of diversified but enriching profiles of our evolutionary group.

13. **Gynosomatics.** According to Gynosomatics, the bioenergetic balneum needs to concentrate its efforts in the direction of gaining better understand and offering new approaches, so that women can live better with their more sophisticated human body, the gynosoma, their gynochakra and their *gynothosenes*.

**CEAEC HAS IMPLANTED  
THE GYNOTHECA,  
A SPECIALIZED SECTION OF THE  
HOLOTHECA THAT IS DESTINED  
FOR THE RESEARCH OF ALL  
THAT IS RELATED TO THE**

*Conscientia*, 3(4): 251-275, out./dez., 1999

## WOMAN AND HER CONSCIENTIAL EVOLUTION.

14. **Holochakralogy.** According to Holochakralogy, the energetic bath and the bioenergetic balneum inspire and create *Bioenergetic Balneology* or the study of energetic baths and their paratherapeutic applications.

**Geography.** Balneology is studied within Human Geography.

**Upgrade.** The bioenergetic balneum promotes the upgrade of the holochakral flexibility of the intraphysical consciousness, whose energies become more intense, fluent and dynamic.

15. **Holosomatics.** Based on Holosomatics, there are 3 similar and pertinent realities in this context, listed here in logical order:

A. **Potability.** The *potable water* (H<sub>2</sub>O) appropriate for drinking and keeping the somatic health.

B. **Balneability.** The *balneable water*, appropriate for baths and keeping the bodily hygiene.

C. **Assimilation.** The homeostatic, *assimilable energy* of the balneum, adequate for taking the intraphysical consciousness to holosomatic homeostasis.



Photography 06. Foz do Iguacu - The Falls

16. **Intermissiology.** Regarding Intermissiology, it is important to emphasize the *analogy*, which is widely narrated by the people who perform their experiments in the laboratories of the bioenergetic balneum in Foz do Iguacu, between the Center for Higher Studies of the Consciousness and the intermissive courses of which they took part before somatic rebirth.

17. **Intraphysiology.** Within Intraphysiology, one of the earthly locations that is the most charac-

teristic – a real prototype – of the condition of a bioenergetic balneum is *Knowledge Town* - the already referred CEAEC - in which one takes advantage of the environment, the ecology, and of the manifestations of the vigorous nature through the use of the consciencial self-research laboratories and the Holotheca, in order to create and keep a healthy *local holothosene* in the Bairro da Consciência, Rua da Cosmoética, N. 11, in Foz do Iguacu.

**CEAEC.** Among other resources, Foz do Iguacu, the town that lodges CEAEC, has Iguassu Falls, the Itaipu Binational Plant – one of the largest human constructions – and the mark of the 3 frontiers: Brazil, Argentina and Paraguay.

**Chakra.** The area used by CEAEC is considered by many researchers and energicists as *one of the chakras of the Earth*.

**Opportunities.** In the condition of a center for higher studies, CEAEC has the purpose of always being the place for the approximation of the various *multidisciplinary tendencies*, offering the same opportunities for the evolution of interested people when they are already aware of the general conciliation of megafaternity.

**ICU.** With its laboratories and its Holotheca, CEAEC is interested in giving its small but lucid contribution to the project of reconstruction, education and research of the consciousnesses, in order to take the planet out of ICU (intensive care unit), starting from Rua da Cosmoética.

**Foz do Iguacu.** Here are 10 important and curious facts related to the whole area of Foz do Iguacu, in Paraná, Brazil, listed in alphabetical order:

01. **Birds.** There are already 550 catalogued birds from 155 species in the municipal district.

02. **Butterflies.** In an hour one can see a thousand butterflies – an assembly of beauties – in the middle of the green.

03. **Falls.** Iguassu Falls, the biggest set of water falls in the Earth, is in a park that was listed by UNESCO as Patrimony of Humanity in 1986.

04. **Hydroelectric.** The Hydroelectric Plant of Itaipu Binational is among the biggest in the world in volume of concrete and generation of energy.

05. **Preservation.** There are 180 thousand hectares of preserved green areas in the region.

06. **Rainbow.** A helicopter cuts the rainbow of the Falls from time to time.

07. **River.** The Iguacu River is a whirlpool of 1,750 cubic meters per second. In the Falls, the biggest

volume of water that is known in the Earth tumbles down.

08. **Tourism.** There are 17 tourist points in the town of Foz do Iguaçu alone.

09. **Wonder.** The Falls are considered one of the natural wonders of the planet.

10. **Word.** The word *Iguaçu* means "big water".

**Rooms.** CEAEC is composed of various buildings, and we can highlight the following 13 functional rooms that structure the basic complex, in this analogical order:

01. **Reception.**
02. **Administrative Office.**
03. **Basecon.**
04. **Researcher's House (Village).**
05. **Dining Hall.**
06. **Convention Hall.**
07. **Holotheca.**
08. **Holocycle.**
09. **Green Lab.**
10. **Recyclotheca.**
11. **Ecological Track.**
12. **CEAEC Kids.**
13. **Laboratories.**



Photography 07. *Basecon II: Dwelling of Resident Researchers*

**Laboratories.** Here is the list, in alphabetical order, of the 16 laboratories – surrounded by flowers and small birds – that are in use in CEAEC, as well as their 10,434 experiments, broken down by laboratory, up to 12.31.2000, seeking to accelerate the self-consciousness in the Century XXI or Third Millennium.

01. **Cosmoethics:** 417.
02. **Cosmogram:** 57.
03. **Despertology:** 396.
04. **Energetic-animic-psyhic Signals:** 722.
05. **Evolutionary Duo:** 253.
06. **Evolutionology:** 200.

07. **Existential Program:** 663.

08. **Mentalsomatics:** 250.

09. **Paragenetics:** 362.

10. **Penta:** 1,545.

11. **Projectarium** or Projective Techniques: 721.

12. **Retrocognitarium:** 799.

13. **Self-organization:** 637.

14. **Thosenology:** 1,060.

15. **Vibrational State:** 1,459.

16. **Waking Physical Immobility:** 893.

**Evocation.** Each laboratory is a practical, automatic and inevitable evocation of its specific finalities as soon as the researcher, man or woman, enters through the door. This is a triggering, factor, functional and efficient.

**Indications.** Following are some considerations concerning the indications of each consciential self-research laboratory in the bioenergetic balneum, according to the tendencies, interests, needs or specific investigations of the intraphysical consciousness.

**Facts.** Those who guide themselves in always predictable ways do not accept the facts and make more mistakes. Self-organization is not the same as *continuous predictability*. Facts must rationally guide our research and self-thosenity.

**Self-reflection.** However, the facts show that the person who is a victim of his/her involving occupations generally are not able to spend useful time, that is more reasonable, with him/herself. Within the automatism of daily routine, he/she loses contact with his/her own self. At this point, self-reflection disappears. He/she stops living healthily. He/she becomes active, however, vegetates as a plant dominated by high wind. From this arises the intraphysical consciousness that requires the therapy of intraphysical recycling. At first, the *Self-organization Laboratory* is specially indicated for this personality.

**Pathothosenes.** The intraphysical consciousness that seeks to benefit or take advantage of his/her *weak traits*, without combating them with self-organization, changes the *miniweak traits* into *megaweak traits*, and consolidates the self-intrusion for a long time through the self-corruption or pathothosenes.

**Catalysis.** Cosmoethics is a powerful factor for the *catalysis of creativity*, capable of putting pressure on the intraphysical consciousness by means of 4 counterpoints:

A. **Convergence.** The convergence in the divergence.

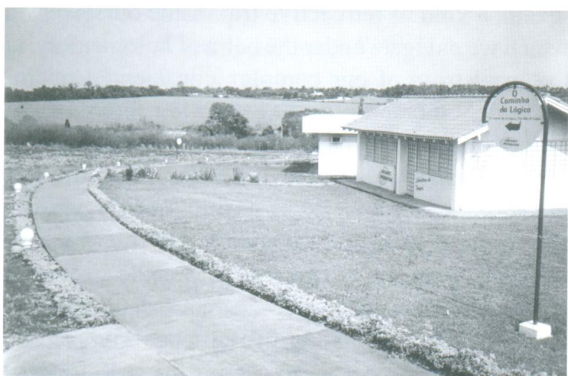


B. **Empathy.** The empathy between the opposites.

C. **Unexpected.** The unexpected in inevitable routines.

D. **New.** The new in the middle of antiques.

**Dawn.** For many intraphysical consciousnesses, the dawn of the *cosmoethical consciousness* has not shined yet. These personalities remain distant from the lasting intraphysical recycling, and even more from the experienced intraphysical recycling. Those who have a specific difficulty with facing themselves regarding morals and ethics should seek the self-research of the *Cosmoethics Laboratory*.



Photography 08. *The Way of Logics and Penta Laboratory*

**DO NOT THINK THAT THE  
STARS ARE TWINKLING  
TO YOU NOR THAT THE  
LEAVES OF THE TREES ARE  
WAVING GOODBYE TO YOU.  
THE COSMOS WELCOMES  
YOU, BUT YOU DO NOT  
MONOPOLIZE THE COSMOS.**

**Megafraternity.** Megafraternity is a cosmic and cosmoethical consequence.

**Energies.** There are 3 laboratories that more closely concern those who are interested in the mastery and development of their consciential energies (CEs), two priorities of intraphysical life:

A. *Vibrational State Laboratory*.

B. *Energetic-animic-psychic Signals Labora-*

*tory.*

C. *Penta Laboratory*.

**Parapsychism.** The consciential self-research laboratories are functional and efficient, for example, as instruments for the development of our essential mentalsomatic attributes, in order that we can enlarge our parapsychism.

**Principle.** As an indispensable principle to the experience of any more expressive mentalsomatic labor, the development of the intellectual life of an intraphysical consciousness is impracticable without two priority technical postures:

A. **First:** the use of mental self-concentration.

B. **Second:** the fixation of one's attention through the same self-concentration.

**Attributes.** For that, let us look at the specific relationship of the laboratories with 3 consciential attributes in particular:

A. **Mental concentration:** Mentalsomatics.

B. **Attention:** Holomaturology.

C. **Memory:** Mnemosomatics.

1. **Concentration.** Applying taxonomy to the faculty of mental concentration, it is not difficult to identify the existence of at least two basic categories of *loss of psychical concentration*:

A. **Minutes.** The person who can concentrate on the same subject or intellectual research for some minutes only, and then is carried along by the *infantile jumping attention*, feeling tired, bored, or desiring to change activities, go out, walk, due to psychomotive power (cerebellum). To this person, the *Waking Physical Immobility Laboratory* is rationally indicated.

B. **Hour.** The person who cannot concentrate on the same subject or intellectual investigation for more than an hour without appealing to deviations of attention and without permitting entanglement in marginal themes that are intrusive to his/her flow of lucid conception. To this person, the repeated execution of clipping work in the *Cosmogram Laboratory* is indicated to enlarge his/her capacity of fixing the attention for more than hour.

2. **Attention.** Applying taxonomy to the capacity of attention, it is easy to conclude that there are at least two basic categories of *inattention*:

A. **Total.** The inattentive or *unplugged (not connected)* person regarding the essential things around him/her, at that moment and circumstances, due to a daydream (a *total disconnection* from everything), attached to a deep worry of an emotional or moral base.

**B. Part.** The attentive intraphysical consciousness regarding an idea or action (*first attention*), but inattentive regarding the logical sequence of his/her consecutive actions, showing difficulty in *changing the block* of his/her manifestations. Without the mastery of the *secondary attention*, he/she cannot experience the state of *split attention* (*partial selective disconnection*).

**Disuse.** Both the categories show the absence of the cultivation of the attention of details or the chronic disuse of the fixed attention when it is sophisticated. At first, the *Waking Physical Immobility Laboratory* is specially indicated for both personalities.

**Controls.** The biggest problem of mankind is not the control of the atoms, but the control of the neurons on the part of who controls the atoms. The biggest problem in the evolution of the consciousnesses is not the control of the gesture, but the control of the thosenity of the brain of who moves the hand.



Photography 09. Penta Laboratory

**Self-thosenity.** The *Homo sapiens serenissimus* (Serenissimus) has reached the experience of serenity because he/she has learned to control his/her self-thosenity. That is why the technique of the waking physical immobility is so important, both physiologically and parapsychologically.

3. **Memory.** Applying taxonomy to the capacity of memory, it is not difficult to identify at least two basic categories of *hypomnesia*:

**A. Intraphysicality.** The person, a frequent victim of the *consciential blank*, who shows difficulty in specifically remembering a proper name or a common noun in the middle of a critical moment that is pertinent to the imaginative flow of his/her discourse (*light hypomnesia*), or that other who asks with evident constraint, in the middle of the narration: – “What exactly was I saying?”

**B. Extraphysicality.** The person who is a consciential projector of weak memory in the state of ordinary physical waking and who cannot retain at least the logical basic line, or the most critical peak of his/her recent, extraphysical, projective experiences, that is, without reasonable *projective recall* (*multi-dimensional hypomnesia*). In this case, there is a primary blockage of holomemory.

**Intellectuality.** Both the categories show the absence of the cultivation of memory or the chronic disuse of intellectuality. At first, the *Retrocognition Laboratory* (*Retrocognitarium*) is the most indicated for these people.

**Re-exam.** The *retrocognition* is a personal re-exam, a kind of retroactive trip inside ourselves, in which we navigate under the helm of holomemory, in the maelstrom of our complex consciential micro-universe, embracing in its expansion thousands of retro-lives, retro-somas and retro-intermissions.

**Rediscoveries.** Through the pleasant and unpleasant rediscoveries of healthy retrocognitions, the intraphysical consciousness enlarges its self-esteem. Beginning from there, he/she promotes recyclings and continuous re-measurements inside and outside him/herself, aiming for existential completism, in the condition of vigorous personality, self-aware of his/her role and of his/her performances on the stage of human life, always in transit through present-future. The Retrocognition Laboratory opens the curtain of personal past.

**Impulses.** In theory, the development of the 3 consciential attributes here analyzed can still receive renewing impulses in the *Mentalsomatics Laboratory*.

**Relation.** According to Conscientiometry, people can be realistically divided into 3 categories regarding their predominance in the *relation temperament-intrudability*:

**A. Self-intrusion condition.** People who are predominantly suffering from self-intrusion: they form the absolute *majority* of the components of mankind. They are often stubborn, pessimistic, possessive, difficult to deal with. They always first put an obstacle or a complaint in the contexts, and later execute their manifestations, which are generally not assistantial, but antipathetic. They still cannot love people in an open and sincere manner. They live unhappy about themselves, and are frequently masochist.

**B. Hetero-intrusion condition.** People who are predominantly suffering from hetero-intrusion:

they always exist due to the former condition of self-intrusion. They present themselves as evidently and frankly insane or sickly, vampirizing. Such personalities keep the Earth in the condition of a mega-hospital, and are unhappy about themselves, about others, or with others. The majority of them live with ostensive discrimination, factionalism or sectarianism.

**C. Intrusion-free condition.** People who are predominantly in the intrusion-free condition: they form a *micro-minority* within the components of mankind. They are open-minded, optimistic, assistential, more easy-going, sympathetic to a greater number of intraphysical consciousnesses. They already love the human beings without subhuman segregation nor excessive demands, and make bigger interconsciential concessions. Strictly speaking, they experience the beginning of what one can call *happiness*, that is, they live predisposed to the condition of being permanently and totally free of intrusion.

**Incidence.** In a human family with 6 elements, it is frequent to find together these 3 categories of intraphysical consciousnesses searching for a bigger fraternal integration towards consciential evolution. At this point, the following questioning is valid: "In which of these 3 categories are we inserted?"

**Doubts.** If someone shows any doubts regarding his/her category in a simple test, he/she should try the defining experiences of the *Despertology Laboratory*.

**Self-discernment.** Self-discernment is the sugar that sweetens the bitter trace of the leading-edge relative truth.

**WHO HAS ONLY GOOD  
WILL AND GOOD INTENTION,  
GENERALLY PUTS MASK, MAKE  
UP AND COSMETIC ON THE  
TRUTH THAT HE/SHE CAN  
ALREADY FORESEE. PURE  
ILLUSION, IGNORANCE OR  
TOTAL SELF-CORRUPTION.**

**Truth.** The truth imposes itself today or tomorrow, here or there. Self-discernment as well. This way walks the evolution of the consciousness. Do

the leading-edge relative truths already impose themselves on you? Do you already admit the possibility of your awakening to the intrusion-free condition in this lifetime?

**Love.** Here, among others, are 5 factors that are opposed to the pure, romantic, authentic, love within the still pathological intraphysical society:

A. **Passions:** the ephemeral adventure, the beginning of promiscuity.

B. **Social class:** the level of petulance and arrogance that arrives at the paroxysm.

C. **Human laws:** legal ambiguities and the culture of impunity.

D. **Primary moral:** euphemisms and hypocrisies in free action.

E. **Races:** consciential blindness, generated by the blood, called *racism*.



Photography 10. *Cosmogram Laboratory*

**Leadership.** The quality of the average cognition of the population is that which specifies its culture. The personal knowledge of the leader reflects on the whole people. Nobody should be elected without the careful analysis of the personal curriculum of the candidate. As it is well-known, the psychopath leaders have caused a lot of bloodshed in the whole of Human History.

**Plurality.** The autocrat (totalitarian or dictator), whether he/she is domestic or collective, has not learned to live together with the plurality yet, and for that has not assimilated the lessons of his/her long subhuman former experience, since the level of bacteria up to the sociability of gorillas. Such a person has difficulty in constituting an evolutionary duo on an evolved level.

**Rectification.** The majority of existential recyclings, for both man and woman, demand rectification that can be synthesized in 7 levels, in this systematic order:

A. **Adulthood.** To become a lucid adult man (or woman), convinced of his (or her) potentialities.

B. **Self-awareness.** To acquire greater awareness of him/herself in the condition of multidimensional being.

C. **Rising.** To rise with courage from the sub-humanity that is intrinsic to the common, unavoidable, personal genetics.

D. **Presence.** To take effective possession of his/her personality, not needy anymore, and expand the strength of his/her presence without fear.

E. **Liberation.** To set free from intellectual servitude, anti-logical systems, doctrines that are destructive of liberty, and factious lines that impose bigger leashes of the ego.

F. **Holothosenes.** To keep and improve the social order through the improvement of the collective holothosene, beginning from the personal holothosene.

G. **Self-performance.** To transform one's own capacity into efficiency, accelerating his/her own performance.



Photography 11. Event Hall

**Woman.** In this aspect, it is important to emphasize that the woman – when universally superior – changes the human gestation to the consciantial one (existential inversion) since youth. She is the best personality to be dedicated to the clarification task through pedagogy, becoming the educator of mankind.

**Duo.** For the reasons above, we conclude that constituting an evolutionary duo is one of the priorities of the intraphysical consciousness, man or woman. The person who is interested in this important subject would rather experience first the practices of consciantial self-research in the *Evolutionary Duo Laboratory*.

**Mimicries.** We are *hetero-unrepeatable* consciousnesses (exemplarism) and we are *self-repeatable*

*ble* consciousnesses (self-relay) from one life to another due to self-mimicries. The personal mimicry, when dispensable, is a harm that we do to ourselves, impossible to be executed by others.

**Guilt.** Guilt is personal only regarding the infantile repetitions in which we lounge ourselves, in the same way the subhuman animals do in a condition of blind regression, when dominated by the atavistic reptilian brain.

**Mysteries.** The difference between the artist and the scientist is in their relationship with the mystery, the unknown, the ignored evolutionary front.

**THE ARTIST TRIES TO  
PRESERVE MYSTERY AS  
IF IT WAS AN UNLIMITED  
RICHNESS. THE SCIENTIST  
SEEKS TO DESTROY  
MYSTERY AS IF IT WAS  
AN ILLNESS BORN  
FROM IGNORANCE.**

**Recyclings.** Growing crisis produces the conflicts of the development and evolution. Heterocriticism based on Cosmoethics purifies and recycles. Culture and knowledge also demand recyclings to avoid neophobia, conservatism and consciantial fossilization. Due to the details of all these considerations, the *Evolutionology Laboratory* is especially indicated to those who are prepared for evolutionary recyclings.

**Silence.** There are various categories of silence, e.g. the following 5:

A. **Corpse.** The corpse shows the mineral or evolutionary silence.

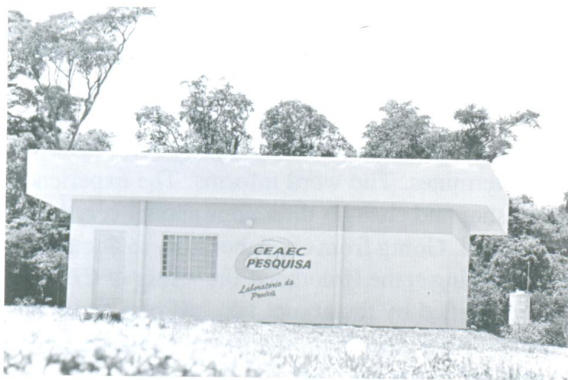
B. **Hibernation.** The hibernation points out the physiological or subhuman silence.

C. **Comatose.** The state of coma indicates the laryngeochakral or verbal silence.

D. **Desoma.** The deactivation of the human body represents the intraphysical silence or the silence promoted by the extraphysical dimension.

E. **Resoma.** The intraphysical rebirth is preponderantly the extraphysical silence or the silence imposed by the intraphysical dimension.

**Cons.** However, the worst of all silences is that of the personal paragenetics of that intraphysical consciousness whose holomemory does not work well, who possesses limited innate ideas, without a great recuperation of the units of lucidity – cons or hyperacuity. The *Paragenetics Laboratory* is particularly indicated for this specific personality.



Photography 12. Existential Program Laboratory

**Holomaturology.** According to Holomaturology, the mechanism of self-thosenity (Paraphysiology) begins from the conception or elaboration of the thought (the *tho* of the thosene); passes through the primary emotion or the elevated sentiment (the *sen* of the thosene); arrives at the consciential energies (the *ene* of the thosene); and, in this context of complexity, forms the lightening or super-fast flow between perception – or paraperception, according to the case – pretension, desire or decision. Besides that, there is also the transformation of the theoretical intention and its materialization into a concrete thing. We constantly act this way, forming our thosenic manifestations.

**Ambiguities.** Holomaturity warns the interested men and women about the following 7 ambiguities that exist in the intraphysical society (Base-year: 2001), and that demand concentrated attention:

- A. **Affections.** Pure and impure affections.
- B. **Euphoria.** Healthy and sick euphoria.
- C. **Friendships.** Evolutionary and idle friendships.
- D. **Ideologies.** Libertarian and enslaving ideologies.
- E. **Intentions.** Strong-trait and weak-trait intentions.
- F. **Leisure.** Cosmoethical and anti-cosmoethical leisure.
- G. **Pleasures.** Dignified and undignified pleasures.

tures.

**Neophilia.** In the search for reasons, the researcher or the conscientiologist (man or woman) – an eternal questioner, with a healthy curiosity, insatiable, and discontented with his/her reality – reaches the leading-edge relative truths, or the original ideas of Heuristics: inventiveness, discovery and neophilia, beyond the banalities of daily life.

**Conscientese.** Everything that concerns the most intimate activities within our consciential micro-universe reaches a parameter of velocity and efficiency (performance) still incomprehensible to our limited and prosaic intraphysical view. That is why our comprehension and deeper apprehension of the concept and reality of the conscientese, for example, become so difficult.

**Frequency.** Those who are interested in the deepening of these approaches to holomaturity should regularly attend, for a reasonable period of time, the *Thosenology Laboratory*.

**Residues.** The human life can be considered to be like a chemical reaction the precipitation of which, indubitably, leaves residues. Those who make fewer mistakes – or achieve the existential completism – are those who leave consciential residues besides the irremovable organic ones. The fruits of polykarmality appear there.

**Trinomial.** There are pacific intimate pauses and turbulent ones. There are healthy groupal holidays and sickly ones. There is useful domestic leisure and harmful domestic leisure. The *trinomial motivation-work-leisure* succeeds in rectifying these 3 convergent variables. A personal behavior only obtains a cure through self-cure. At first, the *Existential Program Laboratory* is the most indicated for those who undergo these kinds of vicissitudes.

**Finitude.** The evolutionary intelligence is the most efficient resource for transcending our finitude in the condition of intraphysical consciousnesses. By theorice there are two instruments in this context:

- A. **Projectability.** The lucid projectability (LP).
- B. **Experience.** The experienced cosmoethics.

**Time.** The eternity of the consciousness annihilates time because it means a time without limits. After all, what do time and horizon represent besides abstractions? However, the consciousness per se is not, strictly speaking, abstract. It destroys abstractions. This fact is sometimes extremely paradoxical.

## DIRECTLY EMPLOYED, THE

**PSYCHOSOMA PERMITS MORE  
CONCRETE MANIFESTATIONS  
THAN THE SOMA. ACTING  
ISOLATED, THE MENTALSOMA  
ALLOWS MORE OBJECTIVE  
MANIFESTATIONS THAN  
THE PSYCHOSOMA.**

**Psychosoma.** At first, the *Projective Techniques Laboratory* or *Projectarium* is the most indicated to meet the needs of those who search for a better identification with the psychosoma and a self-aware and high-technical-level employment of it.



Photography 13. *Holotheca: Entrance*

**Paradox.** By the way, the projection of the lucid intraphysical consciousness is an eternal paradox; however, let us see the following 4 manifestations, here in ascending order:

A. **Projection.** The consciousness projects itself from this human dimension.

B. **Updating.** This way, it seeks to take in stimuli, assistential lessons, confirmations and updating with helpers and evolutionary orientors in another dimension - the extraphysical one.

C. **Fixation.** Such an attitude intrinsically aims to fix it still more and better in this intraphysical dimension without spurious alienations.

D. **Program.** The whole chain reaction of the former 3 initiatives has as greater purpose, the intelligent execution of one's existential program.

**Wisdom.** The greatest wisdom of the lucid intraphysical consciousness is to be temporarily a *semi-extraphysical consciousness* in the ordinary physical

waking state, because all of us already are extraphysical consciousnesses in a definitive way, considering our more permanent experience or extraphysical origin.

**Currency.** In this dimension there are two currencies: self-experience and money. In the extraphysical dimension of any evolutionary level there are two *paracurrencies*: para-experience and consciential energies. As we can note, experience is the only basic, common value that we never lose or can substitute. At this point, the self-research laboratories are of extreme relevance.

**Experience.** An example does not constitute a proof. A fact does. The example points out. The fact determines. The word informs. The experience establishes and changes directions about everything.

**Quail.** Going from one laboratory to another or upon arriving at the Holotheca, the visitor of CEAEC can be startled by the abrupt take-off of a quail that flees next to his/her feet, along the ecological track. In another moment, he/she will see on the ground a dozen Brazilian lapwings that sing 5 meters away. There, nature is always exuberant, in all the areas of manifestations.

**Holotheca.** As examples, following are 50 of the specialized collections (*100 thecas*) or artifacts of knowledge that form the Holotheca – with the *recycling of the intellectual garbage* and its cultural complex in CEAEC – still in the phase of installation and classification (Taxonomy), listed here in alphabetical order:

01. **Androtheca.**
02. **Autographotheca.**
03. **Bibliotheca.**
04. **Biographiotheca.**
05. **Cardtheca.**
06. **Catalogtheca.**
07. **Cinematheca.**
08. **Cognotheca.**
09. **Comicstheca.**
10. **Computheca.**
11. **Conscientiotheca.**
12. **Cordeltheca.**
13. **Cosmotheca.**
14. **Diskettotheca.**
15. **Drawingtheca.**
16. **Encyclotheca.**
17. **Energotheca.**
18. **Ephemerotheca.**
19. **Folklotheca.**
20. **Gynotheca.**

21. **Hemerotherca.**
22. **Historiotherca.**
23. **Lexicotherca.**
24. **Malacotherca.**
25. **Maptherca.**
26. **Mechanotherca.**
27. **Mediatherca.**
28. **Mineraltherca.**
29. **Musicotherca.**
30. **Numismatherca.**
31. **Philateliotherca.**
32. **Phototherca.**
33. **Phytotherca.**
34. **Pinacotherca.**
35. **Projectiotherca.**
36. **Pseudotherca.**
37. **Radiotherca.**
38. **Sciencetherca.**
39. **Sexotherca.**
40. **Symboltherca.**
41. **Technotherca.**
42. **Theatertherca.**
43. **Thosenotherca.**
44. **Tokentherca.**
45. **Toytherca.**
46. **Tvtherca.**
47. **Ufotherca.**
48. **Videotherca.**
49. **Xerotherca.**
50. **Zootherca.**

**Pluralization.** Paradoxically, singular people are the most plural ones. Let us anatomize this paradox through the following 3 confluent approaches:

A. **Paragenetics.** Paragenetics generates the *mentalsomatic hydra*: multicephalic, multiexistential, existential multiprogram (existential maxiprogram).

B. **Computherca.** When isolated, the computherca or the bibliotheca are always simplistic.

C. **Holotherca.** The holotherca is holochakral, holobiographic, holomnemonic, holokarmic, holosomatic, holothosenic, multidimensional, plural.

**Unit.** The intention that permeates the work at the Holotherca is that of always being a central of Science, joining together all the classes of professionals, individuals and subjects that are the basis of consciential evolution, forming a single unit of interactive culture, in which there are opportunities for improvement for both the least and the most capable.

**Clearings.** The artifacts of knowledge of the Holotherca arouse, fortify and elevate the strong traits,

opening clearings to the consciences and to their cosmoethical tendencies, neutralizing the disturbing effects of the annoying bombardment of information and communications that are omnipresent in the modern life of all of us.



Photography 14. *Holotherca: Internal View*

**Ego.** The *volunteer*, man or woman, who is involved in the mentalsomatic activities of the Holotherca, naturally changes his/her ego from common archivist to activist in the research of the consciousness, and becomes a cosmoethical cultural agitator.

**Holocycle.** The Holocycle, acting as an incubator of projects, is the section of the Holotherca dedicated to the work of the research and elaboration of the *Encyclopedia of Conscientiology*. In the Holocycle, the following conscientiological principle of the intraphysical life, which is very functional regarding the research of the mentalsoma, is applied: – “Who applies the consciential and physical space well, saves more of his/her time and energies”.

**Resources.** Drawers are not used in the Holocycle: all the fundamental work is developed openly, in an explicit manner. Here are, for example, 12 technical installations of the Holocycle, in which 45 steel cabinets, 360 modular tables, 70 vats and 40 plastic files for periodicals and clippings, among other resources, are used:

A. **Central Table:** a piece of furniture in marble, 20 meters long and 1.40 wide, destined for basic research.

B. **Bibliotheca I:** with the specific bibliography that is in progress.

C. **Bibliotheca II:** with the collection of new books to be researched.

D. **Encyclotherca:** with the available encyclopedias and great reference books.

E. **Lexicotherca:** with 3 lines of dictionaries

composing a total of 2,130 titles that are openly distributed, in a separate and visible way, along the 170 meters of modular tables.

F. **Hemeroteca I:** with 3 lines of clippings about more than 700 basic subjects, in folders and files that are openly distributed on the tables.

G. **Hemeroteca II:** with 1 line composed of hundreds of magazines, including complete collections.

H. **Hemeroteca III:** with the collections of newspapers that are in phase of research.

I. **Bibliotaph:** with the most rare sources used in the research up to the moment and already classified.

J. **Computheca:** with the section of computer science and the workstation.

K. **Technotheca:** with the collection of equipments, technical instruments and didactical resources, mentalsomatic inclusively, for research.

L. **Pillars:** with useful reminders made through lists or technical memos.

**Syntheses.** As examples, here are 4 among the 25 lists of the *syntheses of the priority knowledge*, distributed among the "Pillars" that structure and support the large hall of the Holocycle:

A. **Pillar of the Knowledge Town (CEAEC):**

1. **Conscientiogram** (Conscientiometry, Strong Traits, Weak Traits).

2. **Laboratories** (Theorice, Personal Choices, Guidance).

3. **Thosenology** (Mentalsomatics, Consciential Attributes, Rationality).

4. **Cosmogram** (Hemeroteca, Specific Personal Research).

5. **Public Holotheca** (Cognotheca, Artifacts of Knowledge, Self-research).

6. **Holocycle** (Encyclopedia, Evolutionary Dynamics, Constructiveness).

7. **Agora** (Parlatory, Brainstorming, Debates).

B. **Pillar of Prekundalini (Soil & Soma):**

1. **Geoenergy** (Magma, Volcanoes, Plates, Caverns).

2. **Hydroenergy** (Aquifer, Rivers, Water Piping).

3. **Phytoenergy** (Roots of the Trees, Tuberoses, Gramineae).

4. **Zooenergy** (Armadillos, Earthworms, Nests in the Ground, Insects).

5. **Aeroenergy** (Lightning, Rain, Dew).

6. **Electrical Energy** (Subterranean Lines, Underground Ducts, Groundings).

7. **Consciential Energy** (Communication,

Telephone, Modem).

C. **Pillar of the Energogram (Holochallenge):**

1. **Energetic Bath** (Provoked, Spontaneous, Self-experience).

2. **Vibrational State** (VS, Key of Human Life, Energetic Self-mastery).

3. **Personal Signals** (Energetic, Parapsychic, Constant Application).

4. **Permanently-totally-intrusion-free** (50% of Serenology, Evolutionary Responsibility).

5. **Lucid Projectability** (LP, Neosynapses, Heuristics, Neologistics).

6. **Pangraphy** (Pancognition, Omnipresent Multidimensionality).

7. **Synchronicity** (Cosmic Interactivity, Chronology, Prospective).



Photography 15. *Holocycle: Internal View*

D. **Pillar of Penta (Megachallenge of the Human Being):**

1. **Self-organization** (Self-discipline, Intrapysical Recycling, Interconsciential Assistance).

2. **Six Months** (Qualification, Results, Consciential Hygiene).

3. **Extraphysical Helper** (Identification, Interaction, Titular).

4. **Evolutionary Duo** (Balance, Holosomatic Homeostasis, Synergism).

5. **Constant Development** (Personal Signals, Parapsychism, Pangraphy).

6. **Period of Experience** (Current Stage, Existential Program, Existential Completism).

7. **Personal Extraphysical Assistantial Facility** (Evidences, Assistantial Maturity, Extraphysical Clinic).

**Dynamics.** In the average, after a week of volunteer work at the Holocycle the intraphysical cons-



sciousness ends up, at least, by accelerating his/her thosenic elaboration as a result of his/her mentalsomatic performance regarding mental concentration, fixed attention, and self-discipline concerning particularities and intellectual details.

18. **Mentalsomatics.** By means of Mentalsomatics, the bioenergetic balneum allows the lucid intraphysical consciousness to set right his/her *consciential pointer*, starting from his/her *energetic holothosene* or from the psychosphere of personal energies. This is the reason for the creation and for keeping the Mentalsomatic Laboratory functioning at the CEAEC.

**Superawareness.** Instinct surpasses hygiene in the consciential principle (subhuman) that does not reflect and draw evolved conclusions. One may wash the pig (swine) a thousand times and it always immediately comes back, if permitted by the circumstances, to the mud.

**Reactions.** Here are 3 reactions regarding lucidity, listed in an evolutionary order:

A. **Instinct.** Like the simple intuition, the reaction of the instinct does not demand lucidity, as it is unconscious.

B. **Hygiene.** The hygiene or the act of having a bath of water demands awareness.

C. **Energization.** To seek a bath of energy already is an act of superawareness.

19. **Parabiology.** Before Parabiology, Nature – formerly, *Ge*; today, *Gaia* – needs to be firstly preserved through the rational use of water. Strictly speaking, we are seas that became aware. The *Water Planet* is thirsty.

**Agrometeorology.** Through Agrometeorology, scientists seek support for the handling of the resources of water and the preservation of springs.

**Warning.** Lecturers all over the countries warn against the waste of water in the world.

**Conscientiology.** Through Conscientiology, one can note that the waste of consciential energies (CEs) is still bigger than that of water in the whole planet. That is why bioenergetic balneums are very relevant, opportune and useful.

20. **Parabotany.** Through Parabotany, the bioenergetic balneum, when it is committed to the understanding and application of *phytoenergy*, as it occurs in CEAEC, ends up by installing and keeping 3 technical activities in the area:

A. **Green Lab.**

B. **Recyclotheca.**

### C. Ecological Track.

21. **Parachronology.** Considering Parachronology, 1998 was the *International Year of Oceans*, proclaimed by the General Assembly of the United Nations, in which the *Letter of the Oceans* – a patrimony for the future – was launched. We should not forget: oceans cover more than 70% of the surface of the globe.



Photography 16. Green Lab

**Day.** The *World Day of Water* is celebrated on March 31 every year.

**HUMAN ENVIRONMENTS,  
WITHOUT ANY EXCEPTION, ARE  
PERMEATED BY CONSCIENTIAL  
ENERGIES. UNFORTUNATELY,  
THERE STILL HAS NOT BEEN  
PROCLAMATION OF ANY  
DAY OR YEAR OF  
CONSCIENTIAL ENERGIES.**

22. **Parageography.** Due to Parageography, the *energosphere* is the set of consciential energies (CEs) that act on this planet Earth and that has increased, the same way as the levels of intelligence and consciential maturity, in an expressive manner during the last century, especially with the demographic explosion from 1950 up to now (Base-year: 2001). Such a state of things obviously facilitates the functioning of the bioenergetic balneum and, at the appropriate moment, many other balneums will be created on the *belt of consciential renewal* un-

leashed by CEAEC.

23. **Parapathology.** Based on Parapathology, in the same way that one applies the *balneation*, an operation destined for the elimination of *ectoparasites from domestic animals* (ticks, scabies) through immersion baths in specific constructions, one also applies the balneation with consciential energies (CEs), aiming at the removal of *extraphysical consciential ectoparasites* (postsomatic parapsychotic extraphysical consciences, intruders, satellites of intruders and blind guides) in the bioenergetic balneum. There, such a practice is spontaneous and permanent within the multidimensional interconsciencial assistance.

24. **Parapedagogy.** Before Parapedagogy, despite the appearances, the *trip* is, above everything, an intraconsciencial displacement. Physical activity stimulates the arising of neosynapses.



Photography 17. *Immersion Course*

**Arrival.** The mere arrival of the traveler at the bioenergetic balneum already represents the impact of an initial recycling due to the specialized *local holothosene* and with the accumulation of experiences of specific thosenes.

**Courses.** Here are, as examples, 20 immersion courses, among dozens of others, which are given in the rooms of CEAEC, listed in alphabetical order:

01. **Advanced Penta.**
02. **Advanced Projectiology.**
03. **Applied Conscienciology.**
04. **Auric Coupling.**
05. **Conscienciogram.**
06. **Cosmogram.**
07. **Energetic Encapsulation.**
08. **Energetic Mastery.**
09. **Energetic Sensitization for Evolutionary**

**Duos.**

10. **Energetic-animic-psychic Signals.**
11. **Evolutionary Intelligence.**
12. **Experiences of Multidimensionality.**
13. **General Brainstorming.**
14. **Immersion in the Cosmos.**
15. **Invexometry.**
16. **Laboratorial Immersion.**
17. **Our Evolution.**
18. **Parapsychism.**
19. **Self-awareness of the Continuous Conscienciousness.**
20. **Theory of Serenissimus.**

**Applied Conscienciology.** The construction of CEAEC, in the condition of a Bioenergetic Balneum, demanded a more intense and deep level of interrelationship on the part of the first volunteers, with the objective of forming a minimum team for the sustainability and continuity of the work proposed. This interrelationship tested, at every minute, the level of self-research and applicability of Conscienciology in the daily life of each researcher involved, revealing achievements and failures, and provoking successive intraconsciencial recyclings in these pioneers during the composition of the basic team. Based on those experiences, the Applied Conscienciology Course arose in 1998 with the purpose of provoking a deep reflection and propitiating techniques, logistics, tactics and pedagogic strategies that were experienced by the volunteers, in order to allow any person to make use of the great laboratory of his/her daily life with an aware optimization of his/her evolution.

**Themes/Classes.** Here are 28 themes/classes of the Applied Conscienciology Course, listed in alphabetical order:

01. **Bioenergies.**
02. **Consciencial Rescue.**
03. **Cosmoethics.**
04. **Energetic Sustainability.**
05. **Existential Program.**
06. **Extraphysical Communities.**
07. **Holothosene and Holothosenic Pressure.**
08. **Mulidimensional Self-awareness.**
09. **Overall View.**
10. **Research in Consciencial Laboratories (CEAEC).**
11. **Reurbanization.**
12. **Self-research.**
13. **The Change of Paradigm (The Models of**

Reality).

14. **The Development of the Energetic Mastery.**

15. **The Dynamics of Assistential Interventions.**

16. **The Dynamics of Assistentiality.**

17. **The Dynamics of Defense Mechanisms.**

18. **The Dynamics of Existential Recyclings.**

19. **The Dynamics of Evolutionary Apprenticeship.**

20. **The Dynamics of Multidimensionality.**

21. **The Dynamics of Thosenity.**

22. **The Relation Attachment-detachment.**

23. **The Research of Self-confrontation.**

24. **The Study of Interrelationships.**

25. **The Study of the Energetic Interactions in Daily Life.**

26. **The Study of the Forces that Shape Human Behavior.**

27. **Thinking in a Multidimensional Way.**

28. **Thosenic Differentiation.**



Photography 18. *Applied Conscientiology Course*

**Types.** There are two types of the Applied Conscientiology Course: Quarterly and Monthly. Here are 6 technical pieces of information about the Quarterly Course, which is given at CEAEC:

A. **Duration:** 24 months.

B. **Teaching Staff:** Team of Researchers of CEAEC.

C. **Periodicity:** quarterly, with 40 immersion hours.

D. **Workload:** 320 hours/classes.

E. **Investment:** admission fee and 24 installments.

F. **Admission:** course without prerequisites.

**Dynamics.** Here are 6 components of the dynamics of the Applied Conscientiology Course, listed in alphabetical order:

A. **Classes:** expositive and interactive.

B. **Debates:** questionings.

C. **Experiments:** directly in the self-research laboratories of CEAEC.

D. **Films:** presentation of selected technical films.

E. **Retrospectives:** groupal dynamics.

F. **Technical visits:** to the multiple sectors of CEAEC.

**Results.** Here are 3 consciential results obtained by the participants of the Applied Conscientiology Course:

A. **Groups.** Formation of groups dedicated to the development of projects in the field of Applied Conscientiology.

B. **Intraconsciential Recyclings.** Occurrence of intraconsciential recyclings, observed by the participants during the course.

C. **Articles.** Production of technical-scientific articles based on the self-research that was developed during the course.

25. **Paraphenomenology.** According to Paraphenomenology, here are, as examples, 40 maneuvers or classical technical procedures with consciential energies (CEs), listed in alphabetical order, and which those interested can seek, experience, understand and, little by little, dominate, starting from research, courses, debates, laboratorial practices and thosenic comparisons in the bioenergetic balneum, e.g. in CEAEC:

01. **Absorption.** Captivating or interiorizing of immanent energies (IEs) and consciential energies (CEs) within oneself, in a self-aware way, selected or chosen by the decision and self-determination of the intraphysical consciousness (*self-thosenes*, *egothosenes*).

02. **Accumulation.** The localization, accumulation or storage of masses of condensed energies generated by the intraphysical consciousness him/herself and by all those present to the intra and extra-physical experiments, both energetic and parapsychic.

03. **Addition.** The addition of energies from outside the consciential microuniverse of the practitioner, man or woman, or the *heterothosenes* (*xenothosenes*) that can be healthy or sickly, and always with useful possibilities of qualitative identification.

04. **Assimilations.** Sympathetic assimilations (assins, synergies, synchronizations) and sympathetic deassimilations (desassins) generated by the decisive and more potent will.

05. **Asynchronizations.** Out-of-tuneness or

asynchronizations of the energetic flow, or the so-called *breaking of the current* with internal and external agents (*heterothosenes*, *xenothosenes*, *laterothosenes*).

06. **Baths.** The baths of consciential energy (CEs), both the intentional, personal ones, and the spontaneous, continuous, rare ones, from more evolved extraphysical consciousnesses (*superthosenes*).

07. **Blockages.** Blockings and unblockings, compensations and detoxifications of extraneous energetic flows when sickly or intrusive to the person's microuniverse (*antithosenes*), or to the current of energy that has already been established and consolidated with affinity and empathy.

08. **Category.** The rational and practical classification (taxonomy) of the categories of the acting energies in general.



Photography 19. *Immersion in the Cosmos*

09. **Chakra.** The identification of the personal chakra of which the manifestations predominate in the energetic current in a certain experiment.

10. **Compensations.** The diverse energetic compensations or unblockings, personal and of others (*groupthosenes*).

11. **Continuity.** The observation of the dynamics of the rare continuous flow of consciential energies (CEs) in certain injunctions of emergency and critical interconsciential assistance, such as the *emergency room*.

12. **Couplings.** Auric couplings and uncouplings generated by the decisive will between intra and extraphysical consciousnesses, through the installation of a specific and temporary energetic field, with homeostatic performances.

13. **Courses.** The course in which the energy circulates within the environment and outside of it, that is, the permanent dynamic or the self-conscious

mobilization of the personal and groupal energies (*materthosene* or *groupthosene*).

14. **Diminishing.** The reduction of the volume or intensity of the energetic flow generated by one's will and abruptly felt.

15. **Direction.** The direction, the side, the course and the destination intentionally applied and traversed by the assistential energetic flows.

16. **Discrimination.** The identification and clear specification of the consciential energies (CEs) at all times, any place, under any conditions or somatic postures.

17. **Dissipation.** The location and identification of the spreading, dispersion or dissipation of the consciential energies. Strictly speaking, regarding consciential energies, nothing is created and everything is transferred.

18. **Donors.** The participants, men and women, who are holders, self-aware donors or supporters of the current of consciential energies, that is, the *most plugged* or *tuned in* concerning the dynamics of energies at that moment and circumstances.

19. **Duration.** The indisputable observation of the period of duration, stay or predominance of a specific dynamic of the energetic flows.

20. **Empathy.** The affinities of the people present, strong or weak, and energetically associated (empathy, *homothosenes*, *orthothosenes*).

21. **Encapsulations.** The *energetic cysts* of those intra and extraphysical consciousnesses that are not adjusted to the environment (*local holothosene*), encapsulated or dependents of extraphysical intruders (*satellites of intruders*, *energyvorous extraphysical consciousnesses*, *postsomatic parapsychotics*) and their *parathosenes*.

22. **Exteriorization.** The liberation, exteriorization or self-aware transfers of consciential energies (CEs) from one *intrapysical consciousness* to another, from one *object* to another and from one *environment* to another, under the impulse of one's decisive will.

23. **Homogeneity.** The homogeneity of the bioenergetic discharge or the uniformity of the intense flow of consciential energies in continuous action.

24. **Increase.** The increase or decrease of the volume or impulsion of the energetic flow, whether it is intermittent, more common, or continuous, more rare.

25. **Intensity.** The identification of the intensity of the flow or the *pulsations of energy* that pass through the intraphysical consciousness at any

moment (*ectothosenes*).

26. **Intermittence.** The self-aware identification of the specificity of the energetic flow that acts through *spurts of discharges* of consciential energies.

27. **Leakage.** The ruptures or the leakage in the energetic current that are felt and neutralized by the will power of the lucid intraphysical consciousness.

28. **Losses.** The apparent temporary losses or subtle - in many cases frequent - transfers of energies in the course of the assistantial work.

29. **Oneirothosene.** The identification of the type of *pathothosene (oneirothosene)* of the person who is dispersed or psychically absent (encapsulated) from the group manifestations (*disconnected*) within the current of assistantial energies.



Photography 20. *Cosmogram Laboratory and Holothecca*

30. **Recomposition.** The normalization in the assimilation of immanent energies (IEs) and the recomposition of the personal levels of consciential energies of the holochakra (bioenergetic homeostasis).

31. **Reinforcements.** The lucid reception of increases or *showers* of reinforcing and unexpected *consciential energies (CEs)* that envelop the intraphysical consciousnesses (*superthosenes*).

32. **Reunification.** The energetic supplies made in favor of the homogenization of the frequencies of energies or *groupthosenes*, when the exceeding energies cover the failures and solutions of the continuity of the flows, reuniting the so-called established *vital current*.

33. **Rhythm.** The frequency, the cadenced pulsation or the exact, average or predominant rhythm of the personal energetic flow.

34. **Specification.** The immediate specification of the energetic flows *in spurts* (intermittent) or continuous, more rare, as soon as the energies appear or overload the intraphysical consciousness.

35. **Synchronizations.** The energetic synchroni-

zations of the intraphysical consciousness with external agents, intra and extraphysical (*cothosenes*).

36. **Temperature.** The sensation of temperature, heat or cold that predominates in the manifestations (*somatic biothermy*) with somatic heating or loss of heating (cooling) through consciential energies (CEs).

37. **Tentacles.** Enveloping *energetic tentacles*, which can be intercepted and annulled through the determination of the will of the self-aware, vigorous personality.

38. **Vacillations.** The mental vacillations or the *xenothosenes* of the people present, when lost in reverie or that *daydream (circumthosenes)*.

39. **Velocity.** The volitional force (intentionality) of the impulsion of the energetic flow or the velocity of the energetic discharge generated by the will, starting from the *materthosene* and the average will of the group in assistantial service (*groupthosenes*).

40. **VS.** The installation of the prophylactic vibrational state (VS) upon initializing and finalizing tasks of energetic interconsciential assistance.

**Complexity.** The 40 initial procedures lead the intraphysical consciousness, among others, to 10 technical maneuvers, much more complex and with healthy and cosmoethical effects:

01. **Biduo.** The aware intensification of the absorption and donation of energies starting from the sexual act or the *bioenergetic biduo* (evolutionary duo).

02. **Check Up.** The practical execution, when necessary, of one's own, immediate, bioenergetic check-up in the maintenance of the *aura of health*.

03. **Congressus.** The neutralization and prophylaxis regarding the *congressus subtilis* concerning interconsciential intrusions with interdimensional sexual basis.

04. **De-intrusion.** Extraphysical de-intrusions, or paraface-to-paraface hetero-confrontations with intrusive extraphysical consciousnesses, starting from self-confidence, fearlessness and cosmoethical assistantial intention.

05. **Energetic springtime.** The enjoyment of the real condition, less sporadic, of the energetic springtime, inclusively by two, within the holothosene of the evolutionary duo.

06. **Evocation.** The evocation - when opportune, clarifying and constructive - of intra or extraphysical consciousnesses, aiming at reconciliation and improvements in the tasks of interconsciential assis-

tance.

07. **Interception.** The interception or temporary annulment of somebody else's paraperceptions with assistantial purposes in favor of all of a group (encapsulation and cosmoethical economy).

08. **Looseness.** The most frequent and healthy conquest of the state of temporary looseness of one's own holochakra, with all the evolutionary, projective and parapsychic consequences in general arisen from there.

09. **Prophylaxis.** The routine use of the prophylactic vibrational state at any moment, under any circumstances, without difficulty or personal sacrifice, as a *top-line* tool or useful evolutionary routine.

10. **Reading.** The spontaneous reading of the energetic aura (psychosphere) of people in general as a healthy practice, whether it is individual or groupal.

**HUMANITY STILL SUFFERS FROM  
MULTIDIMENSIONAL BLINDNESS.  
EXTRAPHYSICAL CONSCIOUSNESSES  
PASS IN FRONT OF EVERY  
INTRAPHYSICAL CONSCIOUSNESS  
ALL THE TIME AND THE  
MAJORITY DO NOT PARASEE  
ANYTHING (FRONTALCHAKRA).**

26. **Paratechnology.** According to Paratechnology, the same way as an *aquifer* can have a deep relation with a common balneum or spa resort, an *energifer* (geoenergies) can have a deep relation with a bioenergetic balneum.

**Aquifer.** Such a fact occurs at CEAEC, which is constructed on the Guarani Aquifer, a water table – or aquatic ecosystem – with 90% of potable water, which is enough for 360 million people for 20 centuries.

**Water.** It is relevant to consider that water composes at least 65% of the structure of the soma, and is vital to human life. The Guarani Aquifer is the biggest reserve of potable water in the planet (Hydrology: hydroenergy).

27. **Proexology.** Observing Proexology, another laboratory that is extremely important in the set of a bioenergetic balneum, due to personal or groupkarmic interests, is the Existential Program Laboratory.

28. **Projectiology.** Concerning Projectiology, a basic area for the development of the bioenergies applied in the bioenergetic balneum, in this case specifically aiming at the departure of the intraphysical consciousness to another dimension, is the *Projectarium*, the Projective Techniques Laboratory.



Photography 21. *The Way of Logics, Laboratories and Event Hall*

29. **Psychosomatics.** As one ponders Psychosomatics, in contrast to the *paradises of leisure*, the bioenergetic balneum is not a *fantasy island*, but a *paradise of personal work* of priority, with multiple opportunities and modalities of option, representing *challenges of priority* for self-surpassing, e.g. the following 6, listed in alphabetical order:

- A. **Cerebellar** (psychomotive).
- B. **Energetic** (holochakral).
- C. **Intellectual** (mentalsomatic).
- D. **Investigative** (heuristic).
- E. **Parapsychic** (multidimensional).
- F. **Pedagogic** (self-didactic).

30. **Recexology.** In the analysis of Recexology, the bioenergetic balneum, which is much more technical than a mere *spa of the consciousness*, always allows the motivated person to execute the worksheets that are the basis for his/her intraphysical and *existential recycling*. Based on this fact, CEAEC constructed and keeps working the Thosenology Laboratory.

31. **Sexsomatics.** By means of Sexsomatics, the bioenergetic balneum cannot abstain from considering *human sexuality* and its problems, one of the bases of the energetic manifestations of the intraphysical consciousness. For that, CEAEC has opted for the creation of the *Sexotheca*, in the structure of the *Holothecca*, in order to deepen the studies of Sexsomatics.

32. **Somatics.** According to Somatics, one

observes the existence of *hydromnemonic*, that is, the *memory of water*:  $H_2O$  stores electromagnetic and biologic information, which acts on the structure of the human body. Consciential energies sponsor the *organismic memory*, besides other categories of memories of the human being, e.g. the cerebral memory and the personal cerebral dictionary.

33. **Thosenology.** From the point of view of Thosenology, the bioenergetic balneum, due to the intense flow of consciential energies (CEs), predisposes bradypsychic or normal-psychic intraphysical consciousness to temporarily or definitely become *tachypsychic* through *tachythosenes*.



Photography 22. *Holociclo: Entrance*

**Correlations.** Besides the subjects mentioned in this essay, here are 40 other themes, listed in alphabetical order, which can indicate new directions for the deepening of research to those who are interested in the understanding and use of the bioenergetic balneum in our intra and extraphysical or multidimensional lives:

01. **Anti-smoking addiction.**
02. **Balloonment.**
03. **Bioenergetic analysis.**
04. **Bioenergetic awareness.**
05. **Bioenergetic ignorantism.**
06. **Bioenergetic self-encapsulation.**
07. **Challenges of priority.**
08. **Consciential asepsis.**
09. **Consciential epicentrism.**
10. **Consciential hygiene.**
11. **Consciential immersions.**
12. **Consciential openness.**
13. **Energetic acuity.**
14. **Energetic armor of defense.**
15. **Energetic aura.**
16. **Energetic catharsis.**

17. **Energetic dimension.**
18. **Energetic self-checking.**
19. **Energetic springtime.**
20. **Environmental adjustment.**
21. **Environmental anti-stigma.**
22. **Evolutionary prioritization.**
23. **Expansion of consciential energies (CEs).**
24. **Extraphysical assistantial facility.**
25. **Healthy intraphysical environment.**
26. **Holochakral self-awareness.**
27. **Human atmosphere.**
28. **Interconsciential bait.**
29. **Intraphysical euphoria.**
30. **Neophilia.**
31. **Neosynapses.**
32. **Orthothosenes.**
33. **Para-sanitary encapsulation.**
34. **Penta (personal energetic task).**
35. **Presence force.**
36. **Self-aware deintrusions.**
37. **Self-potiation.**
38. **Sympathetic energetic assimilation.**
39. **Synchrony parabrain-brain.**
40. **Waking disengagement.**

**Interdisciplinarity.** Besides the lines of knowledge mentioned in the analyses of the text, here are 19 other subjects, listed in alphabetical order, which present a narrow relation with the direct investigations in the bioenergetic balneum:

01. **Architecture.**
02. **Conscientiocentrolology.**
03. **Conscientiotherapy.**
04. **Conviviology.**
05. **Engineering.**
06. **Holochakralogy.**
07. **Homeostatics.**
08. **Hydrology.**
09. **Intraphysiology.**
10. **Library Science.**
11. **Neurology.**
12. **Parageography.**
13. **Paratechnology.**
14. **Pedagogy.**
15. **Proxemics.**
16. **Psychiatry.**
17. **Psychology.**
18. **Recexology.**
19. **Sociology.**

**Lexicology.** It is worth it to point out that in the

specific case of the Holotheca or, more appropriately, the Lexicotheca of the Center for Higher Studies of the Consciousness in Foz do Iguaçu, the total number of dictionaries, mainly the thematic ones, and encyclopedias is already more than 2,130 selected works.

**Self-cognition.** The inclusiveness offered by Lexicology enlarges and deepens the technical knowledge of the person, man or woman, who is interested in rectifying his or her intraconsciential life (intraphysical recycling, existential recycling, existential inversion) starting from self-cognition and upgrading by the technical use, of long continuance, of his/her consciential energies.

**Proxemic Remission:** See *Banho Energético* ("Enciclopédia da Conscienciologia").

#### Specific Setting:

1. **Centro de Altos Estudos da Consciência – CEAEC** (Theme); Classification: Report; Duration: 3 min; Language: Portuguese; *Production:* TV Cataratas (Rede Globo); Program: Jornal Estadual; Reporter: Sandra Regina Santos; Year: 1998.
2. **Centro de Altos Estudos da Consciência – CEAEC** (Theme); Classification: Report; Duration: 3 min; Languages: Portuguese, with subtitles in English; *Production:* TV Cataratas (Rede Globo); Program: Jornal Estadual; Reporter: Sandra Regina Santos; Year: 1998.
3. **Fim do Mundo: As Profecias de Nostradamus**; Presentation: Claudia Vicentin; Classification: Documentary; Duration: 25 min; Language: Portuguese; Participation: CEAEC; *Production:* Rede Paranaense de Televisão (Rede Globo); Program: *Meu Paraná*; Year: 1999.
4. **Técnica da Imobilidade Física Vígil** (Theme); Classification: Report; Duration: 2 min; Language: Portuguese; *Production:* TV Naipi (Rede SBT); Program: *TJ Paraná*; Reporter: Milene Geron; Year: 1997.
5. **Vida Após a Morte** (Theme); Presentation: Sérgio Chapelin; Classification: Documentary; *Direction:* Mariley Zanini; Duration: 43 min; Language: Portuguese; Participation: CEAEC; Program: *Globo Repórter*; *Production:* Rede Globo; Reporter: Rodrigo Vianna; Year: 1998.
6. **Visitando a Morte**; Classification: Documentary; Duration: 29 min; Language: Portuguese; Participation: CEAEC; *Production:* Rede Band; Program: *Jornal da Band* (Special Report); Year: 2000.

#### Specific Films:

1. **CEAEC: Complexo Conscienciológico**; Classification: Documentary; *Direction:* Francisco Eugênio Mauro; Duration: 26 min; Editing: Francisco Eugênio Mauro & Renato Kusdra; Equipments: Multimagem Curitiba; External Reporter: Ruth Sanches; Graphic Computing: Carlos Eugênio Becker; Internal Reporters: Alexandre Balthazar, Celso Lückmann & Mariângela Lückmann; Language: Portuguese; Narration: André Lutz; Photography: Francisco Eugênio Mauro; *Production:* Centro de Altos Estudos da Consciência; Script: CEAEC Team; Year: 1996.
2. **CEAEC: Centro de Altos Estudos da Consciência**; Classification: Documentary; Duration: 21 min; Editing Assistant: Oswaldo Dombrate; Edition: Cynthia Braga & Francisco Eugênio Mauro; Equipments: Multimagem Curitiba; External Lighting:

Marco Antonio Passini; Graphic Computing: Carlos Eugênio Becker; Language: Portuguese; Narration: Maria Aparecida Cavalcanti; Opening Vignette: Carlos Eugênio Becker; Photography: Francisco Eugênio Mauro; *Production:* Centro de Altos Estudos da Consciência; Production Assistant: Vanderli Cardoso de Oliveira; Script & Plot: Cynthia Braga, Denise Paro, Eliane Stédile & Mariângela Lückmann; Year: 1998.

#### Computer Science References:

1. **Balneário:** Home Page – <http://www.baependi.mg.gov.br>
2. **Balneário:** Home Page – <http://www.caxambu.hpg.com.br>
3. **Balneário:** Home Page – <http://www.setur.mg.gov.br>
4. **Balneário:** Home Page – <http://www.usuarios.fepesmig.br>
5. **CEAEC:** Home Page – <http://www.ceaec.org>

#### Projectiological References:

1. **Vieira, Waldo; Projeciologia: Panorama das Experiências da Consciência Fora do Corpo Humano**; 1,248 p.; 525 ch.; 43 illus.; 1,907 ref.; gloss. 300 terms; 150 abbr.; ono.; geo.; alpha.; 27 x 18.5 x 6 cm; hardback; 4<sup>th</sup> edition; Rio de Janeiro, RJ; Brazil; Instituto Internacional de Projeciologia e Conscienciologia; 1999; pages 746 and 907.
2. **Vieira, Waldo; Projeções da Consciência: Diário de Experiências Fora do Corpo Físico**; 224 p.; gloss. 25 terms; alpha.; 21 x 14 cm; paperback; 4<sup>th</sup> revised edition; Rio de Janeiro, RJ; Instituto Internacional de Projeciologia e Conscienciologia; 1992; pages 49, 54 and 176.

#### Specific References:

1. **Allen, Robert**; Consultant-editor; *The New Penguin English Dictionary*; XII + 1,642 p.; gloss. 60,000 terms; 23.5 x 17.5 x 6.6 cm; hardback; dust-cover; Penguin Books; London; England; 2000; page 104.
2. **Amélia, Aparecida; Machado, Daniel Iria; & Fernandes, Ivanilda; Imersão no Laboratório da Sinalética Energética do CEAEC; Conscientia**; Magazine; Quarterly; Vol. 3; N. 1; 1 illus.; 5 ref.; Foz do Iguaçu, PR; January-March, 1999; pages 21 to 27.
3. **Athayde, Greice Gomes Leal; Braga, Ryon Cássio; & Lückmann, Mariângela Vieira da Silva; O CEAEC e a Conscienciologia Aplicada; Conscientia**; Magazine; Quarterly; Vol. 3; N. 1; Foz do Iguaçu, PR; January-March, 1999; pages 34 and 35.
4. **Balthazar, Alexandre Martins; & Lückmann, Mariângela Vieira da Silva; Imersão no Laboratório do Estado Vibracional do CEAEC; Conscientia**; Magazine; Quarterly; Vol. 2; N. 4; 1 illus.; 5 ref.; Foz do Iguaçu, PR; October-December, 1998; pages 171 to 177.
5. **Banco Bamerindus do Brasil; Nossa Terra: Foz do Iguaçu (Our Land: Foz do Iguaçu)**; photos by Orlando Azevedo; 196 p.; 158 photos; 6 illus.; 6 maps; 44 ref.; 30 x 30.5 cm; hardback.; dust-cover; Casa de Idéias Editora de Vídeo & Gráfica; São Paulo, SP; 1989; pages 1 to 10.
6. **Bonalume Neto, Ricardo; Romanos se banham; Babilônios, nem Sempre; Folha de S. Paulo**; Newspaper; Daily; Section: *Ciência*; 7 illus.; São Paulo, SP; 12.22.89; page H – 6.
7. **Burgierman, Denis Russo; Tem Uma Esponja Aqui Dentro** (Aquífero Guarani: Área Maior que França, Espanha & Portugal Juntos); *Super Interessante*; Magazine; Monthly; Year 13; N. 7; Section: *Geologia*; 9 illus.; 2 maps; 3 graphs.; São Paulo, SP; July, 1999; pages 62 to 67.
8. **Conceição, Maria Izabel da; A Conscienciologia Aplicada; Anais do I Fórum Internacional de Investigación de la Conciencia 1999, Barcelona, Spain**; Instituto Internacional de Projeciologia e Conscienciologia; Rio de Janeiro, RJ; 1999; pages



17 to 26.

9. **Donato**, Hernani; *São Paulo Breve Notícia* (Estâncias & Balneários Paulistas); 194 p.; 42 illus.; 124 photos; 8 tables; 1 map; 28 x 21 cm; hardback; Mauro Ivan Marketing Editorial; São Paulo, SP; S. D.; pages 159 to 177.

10. **Fernandes**, Ivanilda; & **Machado**, Daniel Iria; *Laboratórios Conscienciais do CEAEC: Uma Proposta para a Pesquisa da Consciência*; *Conscientia*; Magazine; Quarterly; Vol. 2; N. 3; 2 illus.; 4 ref.; Foz do Iguaçu, PR; July-September, 1998; pages 103 to 110.

11. **Gazeta do Povo**; Editorial staff; *Diversão Garantida* (Parque Aquático de Águas Claras & Piscinas com Correnteza, Paraná); Newspaper; Year 82; N. 26,029; Suplemento Especial de Verão; Rede Paranaense de Comunicação; 1 illus.; Curitiba, PR; 01.26-02.02.01; page 12.

12. **Gazeta do Povo**; Editorial staff; *Para Refrescar e se Divertir* (Parques Aquáticos no Paraná: Rio com Correnteza, Piscinas, Playground, Hidromassagens Gigantes, Hotéis & Natureza); Newspaper; Daily; Year 82; N. 26,025; Section: *Turismo*; 1 illus.; Curitiba, PR; 01.22.01; page 5.

13. **Goodall**, Brian; *The Penguin Dictionary of Human Geography*; 510 p.; 104 illus.; gloss. 3,000 terms; 83 graphs; 16 tables; 15 maps; 86 formulas; 37 diagrams; 4 models; 19.5 x 13 cm; paperback; Penguin Books; London; England; 1987; page 33.

14. **Grecco**, Dante; *O Planeta Água está secando* (Abastecimento de Água Potável no Século XXI); *Globo Ciência*; Magazine; Monthly; Year 8; N. 85; Section: *Terra*; 10 illus.; 3 maps; 1 enu.; Rio de Janeiro, RJ; August, 1998; cover (headline) and pages 54 to 61.

15. **Grein Neto**, Victor; *Camboriú: Um Balneário que deu Certo*; *O Estado do Paraná*; Newspaper; Daily; Year 50; N. 15,009; Section: *Viagens & Turismo*; 2 photos; Curitiba, PR; 02.18.01; page 4.

16. **Guimarães**, Cleo; *Búzios 40°* (Novidades do Balneário & Modismos do Verão); *Domingo*; Magazine; Weekly publication; Year 25; N. 1,290; Section: *Verão*; 9 illus.; Rio de Janeiro, RJ; 01.21.01; pages 16 to 20.

17. **Hasse**, Geraldo; *Prédios tiram o Sol do Balneário Camboriú* (Plebiscito & Alargamento da Faixa de Areia); *Gazeta Mercantil*; Newspaper; Daily; Year LXXX; N. 22,005; Section: *Nacional*; 1 map; 1 enu.; São Paulo, SP; 01.22.01; page A - 6.

18. **Iguassu Festa & Turismo**; Editorial staff; *CEAEC: Projetado para Você Pesquisar a si Mesmo*; Magazine; Quarterly; Year 4; Ed. N. 10; 4 photos; Foz do Iguaçu, PR; May-June-July, 2000; pages 8 and 9.

19. **Itaipu Binacional**; *The Itaipu Hydroelectric Project 12,600 MW: Design and Construction Features*; X + 564 p.; 17 ch.; 195 illus.; 24 photos; 62 tables; 84 graphs.; 6 maps; 3 diagrams; 4 formulas; 13 schemes; 47 ref.; Itaipu Binacional; S. L.; December, 1981; pages 1-1 to 1-7.

20. **Luppino**, José Roberto; *Foz do Iguaçu: o Paraíso das Águas* (Os Programas Imperdíveis na Área); *Na Poltrona*; Inflight Magazine; Monthly; Year 1; N. 12; 10 illus.; 1 enu.; São Bernardo do Campo, SP; June, 2000; pages 10 to 20.

21. **Martin**, Elizabeth A.; *Concise Medical Dictionary*; VI + 720 p.; 142 illus.; gloss. 10,000 terms; 1 table; 1 graph; 1 appendix; 19.5 x 13 x 4 cm; paperback; 5<sup>th</sup> ed.; Oxford University Press; Oxford; United Kingdom; 2000; page 63.

22. **Melo**, Clóvis Augusto; *Aqüífero pode Servir o Brasil por 3.500 Anos* (Aqüífero Guarani, Antigo Botucatu); *Gazeta do Povo*; Newspaper; Daily; Year 82; N. 25,758; Section: *Paraná*; 1 illus.; Curitiba, PR; 04.28.2000; page 14.

23. **Na Poltrona**; Editorial staff; *Balneário de Camboriú visto de Cima*; Inflight Magazine; Monthly; Year II; N. 15; 1 photo; São Bernardo do Campo, SP; September, 2000; page 63.

24. **Nogueira**, César; *O Planeta tem Sede* (Consumo de Água Multiplicado por 6 no Século XX); *Veja*; Magazine; Weekly publication; Year 32; N. 46; Ed. 1,624; Section: *Ambiente*; 4 illus.; São Paulo, SP; 11.17.99; pages 154 to 156.

25. **Estado do Paraná**; Editorial staff; *Balneário Camboriú cresce no Verão*; Newspaper; Daily; Year 50; N. 14,961; Section: *Viagens & Turismo*; 5 photos; Curitiba, PR; 12.24.2000; page 3.

26. **Paraná**; Editorial staff; *Um Paraíso atrai Turistas a Rio Bonito* (Balneário do Rio Bonito, Iguaçu, Paraná); Newspaper; Daily; Year XXV; N. 7,427; Section: *Turismo*; 1 photo; Curitiba, PR; 01.28.01; section cover (headline).

27. **Peres**, Natália; *Botucatu: o Aqüífero Gigante do Mercosul* (Antigo Nome do Aqüífero Guarani); *A Gazeta do Iguaçu*; Tabloid; Daily; Year 10; N. 3,318; Section: *Meio Ambiente*; 1 illus.; 1 map; Foz do Iguaçu, PR; 10.24.99; page 07.

28. **Razera**, Graça; *Inveximetria para o Jovem Desperto* (Invéxis e Assinvéxis); 44 p.; 18 illus.; 2 graphs.; 21 x 29.7 cm; spiral; CEAEC Editora; Foz do Iguaçu, PR; S. D.; pages 2 to 9.

29. **Saint-Hilaire**, Auguste; & et al.; *As Fabulosas Águas Quentes de Caldas Novas*; Anthology; editor T. OriSente; 114 p.; 9 ch.; 19 enu.; 6 tables; 21.5 x 14 cm; paperback; Oriente; Goiânia, Goiás, Brazil; 1973; pages 17 to 30.

30. **Vidal**, Valmiro Rodrigues; *Curiosidades* (Como se aprende, distraindo-se); Fourth Volume; 224 p.; Editora Conquista; Rio de Janeiro, RJ; 1958; pages 158 and 159.

31. **Vieira**, Waldo; *Assimilação Energética Antipática*; *Conscientia*; Magazine; Quarterly; Vol. 3.; N. 2; 16 ref.; Foz do Iguaçu, PR; April-June, 1999; pages 63 to 69.

32. **Vieira**, Waldo; *Cognópolis* (Cidade do Conhecimento); *CEAEC Newsletter*; Magazine; Quarterly; Vol. 1; N. 1; Section: *Opinião*; 1 photo; Foz do Iguaçu, PR; 1999; page 30.

33. **Vieira**, Waldo; *Conscienciograma: Técnica de Avaliação da Consciência Integral*; 344 p.; 100 sheets of evaluation; 2,000 items; 11 enu.; 7 ref.; gloss. 282 terms; 150 abbr.; alpha.; 21 x 14 cm; paperback; Instituto Internacional de Projeciologia e Conscienciologia; Rio de Janeiro, RJ; 1996; page 78.

34. **Vieira**, Waldo; *700 Experimentos da Conscienciologia*; 1,058 p.; 700 ch.; 300 tests; 8 index; 2 tables; 600 enu.; ono.; 5,116 ref.; geo.; gloss. 280 terms; 147 abbr.; alpha.; 28.5 x 21.5 x 7 cm; hardback; Instituto Internacional de Projeciologia e Conscienciologia; Rio de Janeiro, RJ; 1994; pages 271 and 283.

35. **Vieira**, Waldo; *Temas da Conscienciologia*; 232 p.; 90 ch.; 16 ref.; alpha.; 21 X 14 cm; paperback; Instituto Internacional de Projeciologia e Conscienciologia; Rio de Janeiro, RJ; 1997; page 12.

#### Translator's Notes:

1. **Balneum** is a bath resort, a location with public baths, mineral baths, hot springs.

2. **Cordel** is a type of literature composed of cheap pamphlets, magazines, etc., which are displayed hanging along a cord on the sides of a newsstand.

3. **Bioenergetic biduo** is a period of 48 hours after the sexual act in which the retention of the consciencial energy of one partner acts on the energetically satiated personal psychosphere of the other.

**Note.** This essay, special for *Conscientia* magazine, is one of the entries of the Encyclopedia of Conscienciology, which is currently being compiled.